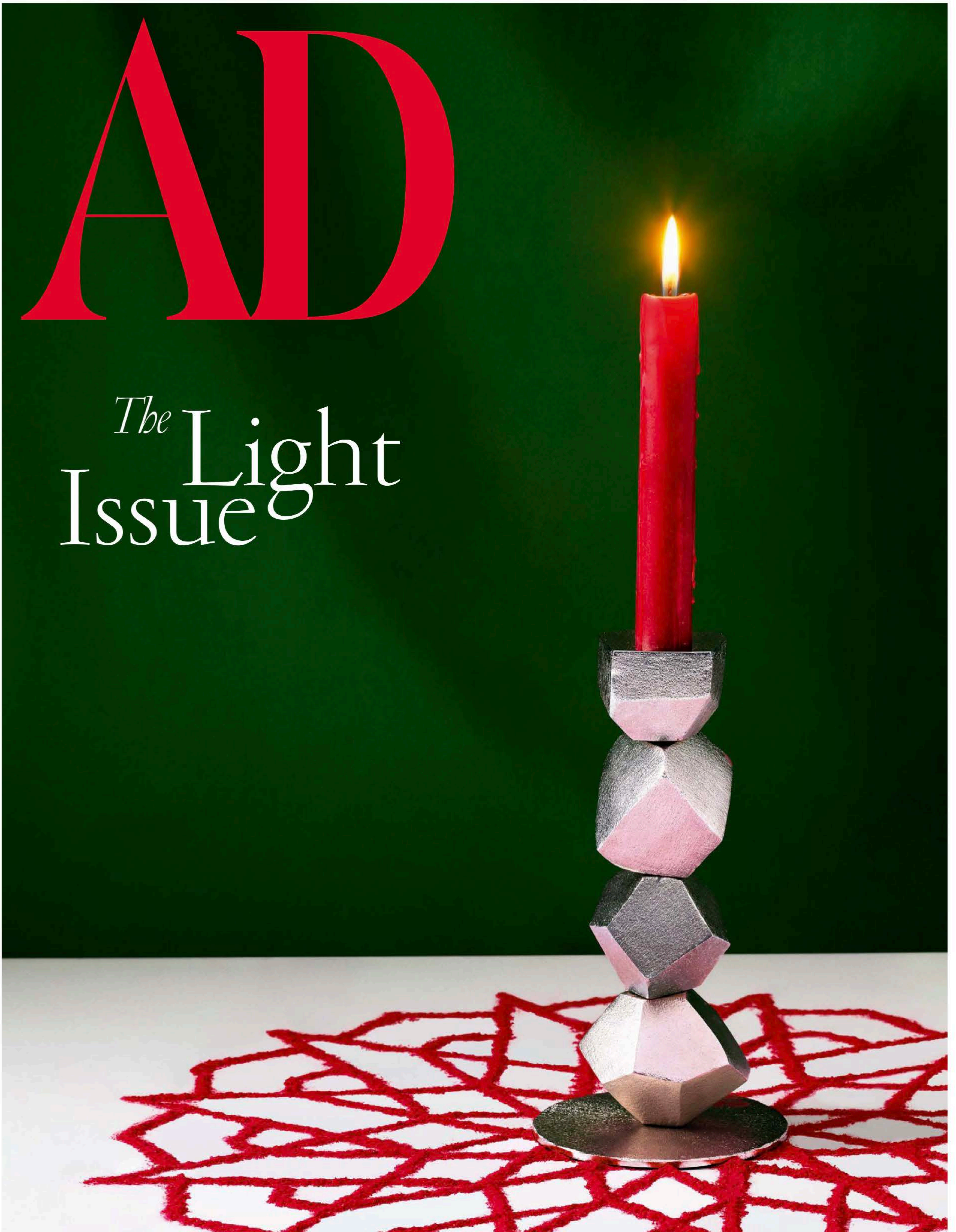


AD

The Light
Issue



FINISHING TOUCHES

The AD Design Show rolls out the red carpet for the pieces that make living spaces extraordinary



THE CARPET CELLAR

Kilims, dhurries, shawls and antique rugs—The Carpet Cellar's inventory is enviable. The New Delhi-based brand will be showcasing its Architectural collection (*left*)—inspired by icons like Tadao Ando and Louis Kahn—at the AD Design Show.

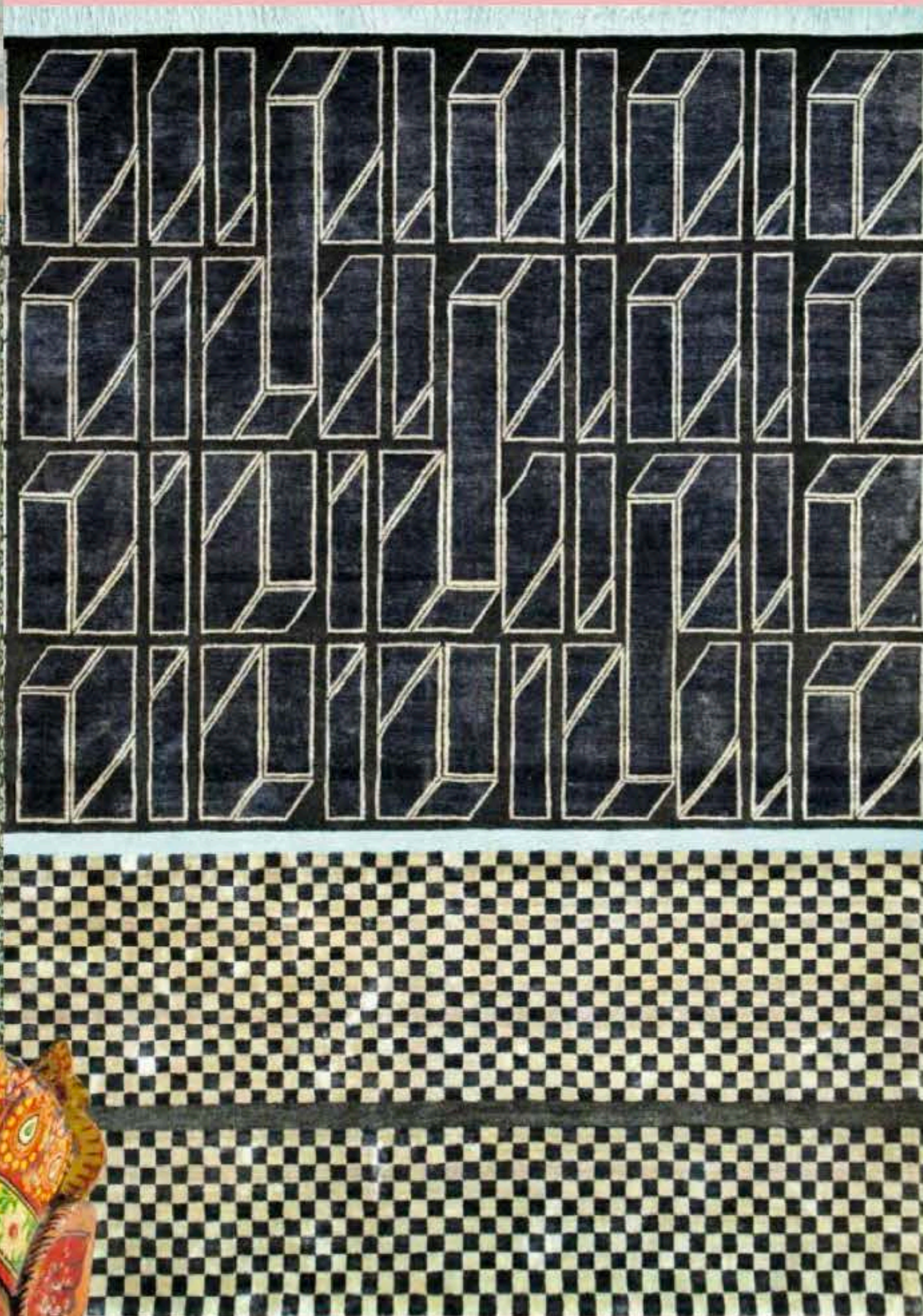
COCOON FINE RUGS

Cocoon Fine Rugs uses natural fabrics to craft contemporary rugs. The brand will display an eclectic mix of pieces, from their most significant collections, including the 'Charcoal' rug (*below*) from the Le Corbusier-inspired CHAND LC collection designed by architect Ashiesh Shah.



JAIPUR RUGS

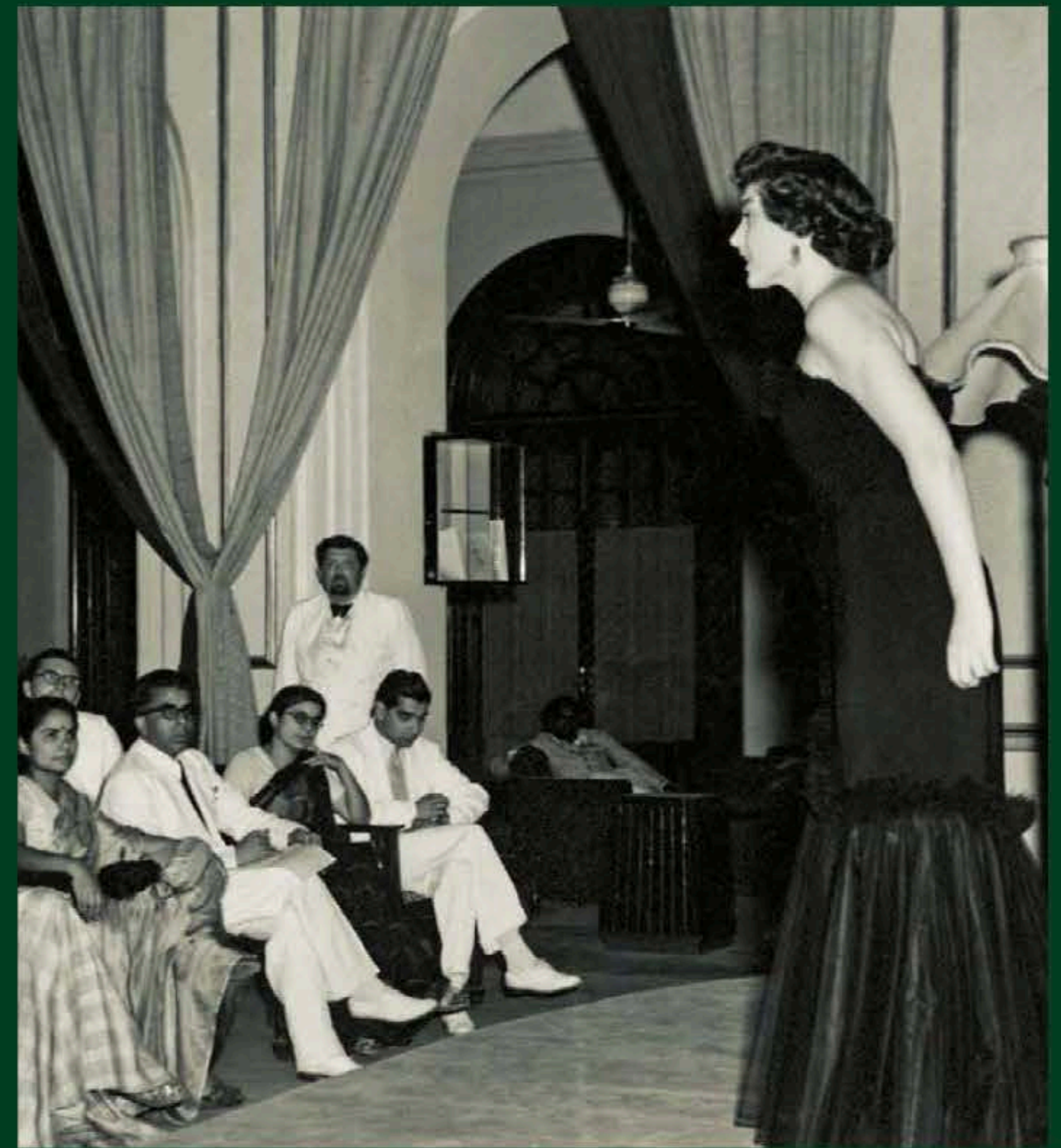
Threads of love, craftsmanship, authenticity and simplicity are woven into every single Jaipur Rugs piece—like the whimsical wool-and-silk carpets from the Aurora collection (*above*). For the AD Design Show, the brand will be presenting Project Error, an award-winning collection that celebrates imperfections.



PHILLIPS ANTIQUES

Everything antique, everything traditional—this family-run brand treasures the past. Their showroom in Mumbai is adorned with colonial furniture, South East Asian trade pottery and original engravings. The selection that will be on display at the AD Design Show will include a set of ornately carved wooden angel wings sourced from Gujarat and a festival head of Narasimha from Odisha (*left*).





Top left: 'Mirror Ball' marble mirror, BoConcept. 'English Pear and Freesia' body crème, 'Wild Bluebell' cologne, Jo Malone London. 'B2002' eau de parfum by Coach, Parcos. Acrylic single-drawer unit and hair clips, MUJI. Sterling-silver hammered box by Greggio, The Silver Room. **Above:** Curtains made using fabric from the Origins collection, D'Decor. 'Vyali' antique wooden sculpture, Phillips Antiques. Bhuta bronze mask (on stand), Moorthy's. Sofa, Mahendra Doshi. Centre table, Phillips Antiques. 'Matisse 1' (amber) 'Matisse 2' (amber), 'Matisse 3' (grey) and 'India' (light amber and copper) stacking vessels by Utopia & Utility, Spacio. Cloth-bound *Persuasion* by Jane Austen by Penguin, Ikkadukka.com. *Diffused* mild-steel suspended sculpture, Durga Gawde. 'Fez' stools, Rubberband.

Vintage chairs, Phillips Antiques. French-style sideboard with brass elements, Taherally's. Box with shells, Kavita Singh Interiors. Wooden vases, Red, Blue & Yellow. 'F' green vase by Dome Deco, Spacio. 'Wave' mirror by Bespoke Home Jewels by Minjal J, The Charcoal Project. 'Persian Pillar Tabrez' carpet, The Carpet Cellar.



'D1790/2A' curtains from the Samsara collection, Dreams Furnishings. 'Jessica' chair with gold frame, Blue Loft. Plant, Vriksha Nursery. *Untitled* (2005) ink and dye on handmade paper by Sohan Qadri, DAG. Art deco bed, Phillips Antiques. 'Marsala' pillow and bedcover, 'Yahi Claret' cushion, 'Flamingo' bedcover, Atmosphere. Brass trunk, Ironworks. Chinese ginger jar, Studio Malabar. *Savile Row* and *Asian Jewellery* coffee-table books, CMYK Book Store. Cloth-bound classic novels by Penguin Books, Ikkadukka.com. 'Marine Drive' side table, Viya Home. 'Lingam' candle, Design Temple. 'Standing Loop' floor lamp, Arjun Rathi. Gilded oval mirror, Taherally's. 'Wire' chair, Rubberband. 'Cavaletto' desk by Franco Albini for Cassina, Poltrona Frau Group. (*On desk*) Box, Le Jahaan. 'Repeat' clock, BoConcept. Lapis photo frame by Bespoke Home Jewels by Minjal J, The Charcoal Project. 'Lime Basil and Mandarin' body crème (jar) and hand-and-body lotion (pump), Jo Malone London. 'B2002' eau de parfum by Coach, Parcos. 'Twist' vase by Moser, The Silver Room. 'Mirror Ball' marble mirror, BoConcept. Acrylic single-drawer unit and hair clips, MUJI. Sterling-silver hammered box by Greggio, The Silver Room. 'Wild Bluebell' cologne, Jo Malone London. (*On floor*) 'Panjurli' boar head, Kavita Singh Interiors.





Above left: *Untitled* (1966) and *Untitled (Group of Nudes)* (1973) ink-on-paper artworks by FN Souza, DAG. Teak armchair with steel details, art deco bar trolley, Pooranawala. 'Corky' glasses by Muuto, Angel Ventures. 'Arezzo' decanter, matt-finish bowl and tray, Trésorie. Dutch carved-ebony box, Mahendra Doshi. 'Jalis' centre table by COR, Plüsch Living. Turkish rugs, vintage south Indian brass lingam and vintage plate, Studio Malabar. *Understanding Jewellery* and *Patterns of India* coffee-table books, CMYK Book Store. **Above right:** 'Bondo Fossil' fabric curtains, Iqrup+Ritz. Oriental cabinet, The Raj Company. Vintage brass planter (with fern), Phillips Antiques. Fern, Vriksha Nursery. (In cabinet) Vintage celadon vase, Phillips Antiques. Vintage brass tiffin boxes, Peacock Life. Mediterranean amphora (on stand), Mahendra Doshi. 'Gap' dining table, Rubberband. 'Chair 14' dining chairs by TON, Kala Ghoda Moderna.





'Metro' wall light, Essajeets. Teak two-seater and armchair with steel details, Pooranawala. Sideboard with inlay pattern, Defurn. (*On sideboard*) Ruby coffee-table book by Thames & Hudson, CMYK Book Store. 'Foo Dog' ceramic sculpture in the Tsang style, Royale Treasures. 'Provence' green bottle by Dogale, The Silver Room. Table lamp with vintage baluster base and georgette shade, Studio Malabar. 'Lotus Leaf' (dark-bronze finish) wall panel, Viya Home. 'Jalis' centre table by COR, Plüsch Living. Kashmiri (*left*) and Turkish rugs, vintage south Indian brass lingam (large) and vintage plate, Studio Malabar. Coffee-table books, CMYK Book Store. Antique brass mukhalingam (small), Phillips Antiques. Marble finial, Kavita Singh Interiors. Bhuta bronze torso (on stand), Moorthy's. *Untitled* (1966) and *Untitled (Group of Nudes)* (1973) ink-on-paper artworks by FN Souza, DAG. Art deco bar trolley, Pooranawala. 'Corky' glasses by Muuto, Angel Ventures. 'Arezzo' decanter, matte-finish bowl and tray, Trésorie. Dutch carved-ebony box, Mahendra Doshi.



PHOTO: TALIB CHITALWALA



Above: Customized monogrammed stationery cards and letterheads, Notesbydhruvco. Ceramic box with flower, leather box, leather-bound diary and desk pad, SIMONE. 'Kharif' soy candle, Shift. **Left:** 'Sinus' recliner with footstool by COR, Plüsch Living. Art deco wine-cooler stand, Pooranawala. 'Raindrop Glass Leaf' tumbler, Good Earth. 'Crust' bowl, HIIIH. 'Claudius' teak angle bracket (*left*) and 'Northbrook' teak leaf bracket, The Raj Company. Vintage celadon vase, Phillips Antiques. Vintage Dutch plate, Studio Malabar. Antique brass Nandi, Studio Malabar.



Production: Bindiya Chhabria
Photographer's Assistant: Anand Wahane

For details, see Stockists